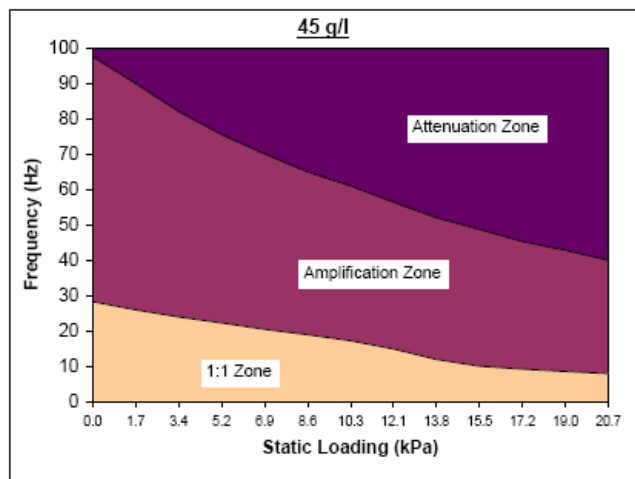
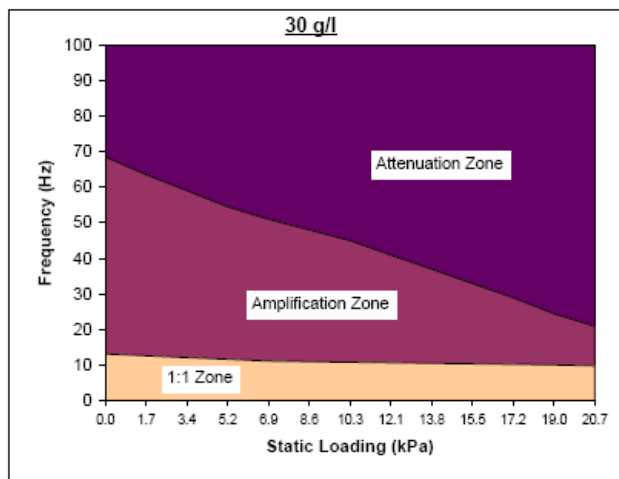
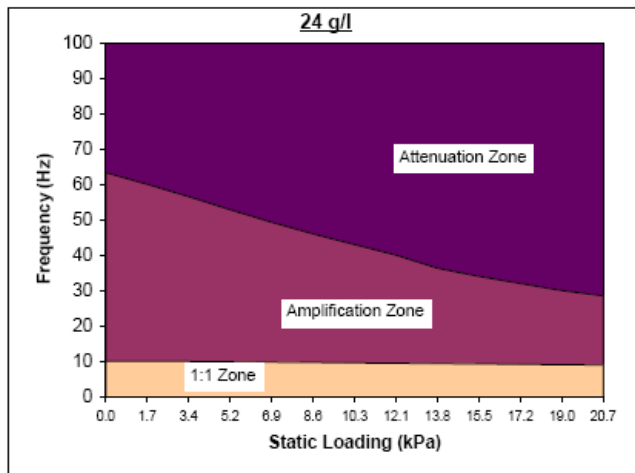
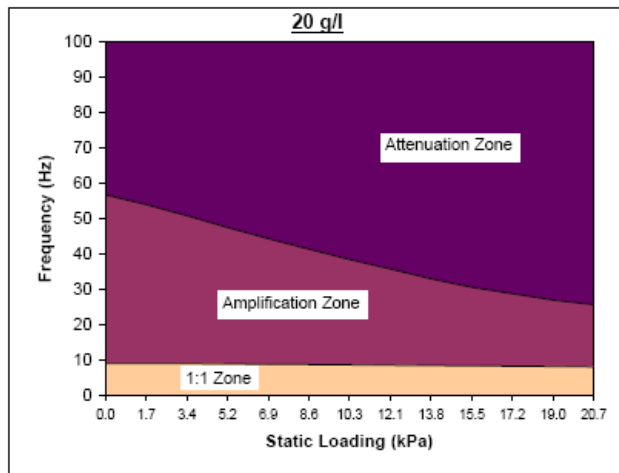


Vibration Response for Foam Densities 20 to 45 g/l (1.3 to 2.8 pcf) Molded from ARPAK® Expanded Polyethylene (EPE)



Note: Sample Thickness = 50 mm (2 in)
 g/l = grams per liter, pcf = pounds per cubic foot
 1.0 kPa = 0.145 psi (Units of pressure/stress)

ARPAK® is a registered trademark of JSP Licenses, LLC. PUBLICATION JSP-VibRes-EPE-20-24-30-ib*45gl-50mm-2009/01

The information contained herein is based upon the results of limited laboratory tests on test samples of material molded from expanded polyolefin resin manufactured by JSP. There can be no assurance that the similar results will be achieved in simulated tests or actual use of commercial product molded by customers of JSP. Product performance may vary substantially depending upon the particular application or processing involved. The listed properties are illustrative only and not the product specifications. All suggestions and recommendations are made without warranty since the conditions of use are beyond JSP's control. Processing and applications of JSP foam products can influence molded part performance in many ways. Consequently, processors and/or users are advised that there may be a need to conduct independent tests and experiments in order for them to determine the extent to which they may choose to rely upon such information in their business operations. JSP disclaims any liability in connection with the use of the information and does not warrant against infringement by reasons of the use of its products in combination with other material or in any process.

Please call us about samples and pricing.
1-800-799-0642

ARPLANK® SALES
 Expanded bead foam packaging materials